

FCL Components Wireless Modules

Wirepas Mesh Tag Unit

FWM8BLZ14T

Overview

Mesh unit (tag) featuring build-in Wirepas Mesh 2.4GHz network connectivity for IoT applications using it together with FCL Components' IoT connectivity Anchors, Sensors nodes, or USB dongle products.

Features

- Create an autonomous/high-density and secure mesh network**
 It has ability to construct a large scale, high-density network under autonomous network rerouting, even if the network environment changes or device fails. Security key provides secure operating environment throughout the mesh network.
- Design for medical facilities and other environments**
 White color is suitable for hospitals, offices, and schools. The rounded body housing may prevent injury during cleaning the unit.
 Thickness is only 5.8mm allowing easy placement between stacked equipment.
- Ingress Protection**
 IP67 rating protects the unit from water and particles ingress (e.g. medicines or stains) and allows it to be washed down and the battery can also be replaced by customers. (Patent pending)
- Flexible mounting style**
 2 screw holes for mounting. Optional bracket is available to attach the unit. If screws are not used, it is possible to seal the holes with fitted white or colored plug(s) for identification purposes.

Applications

Asset tracking in hospitals, offices, warehouses, factories, etc.

■ Specifications

Item	Specification
Type	Mesh unit (Tag)
Part number	FWM8BLZ14T
Mesh technology	Wirepas Mesh 2.4GHz
Transmit power	+4dBm max.
Antenna	Embedded (pattern antenna)
IC	Nordic Semiconductor nRF52832
Carrier frequency / Channel	2,400MHz to 2,483.5MHz / 40 channels (2 MHz spacing)
Modulation / Symbol rate	GFSK / 1 Mbps
Power supply	Coin cell lithium battery CR3032 (not included, factory installation optional)
Operating temperature/ humidity	-30°C to +70°C / 20 to 80% RH
Ingress Protection Rating	IP67
Dimensions / weight	52.8 x 35.9 x 5.8 mm / Approx. 7.5 gr (excluding battery)
Certifications (planned)	Radio Act Japan, FCC, ISED, CE, UKCA

RoHS compliant

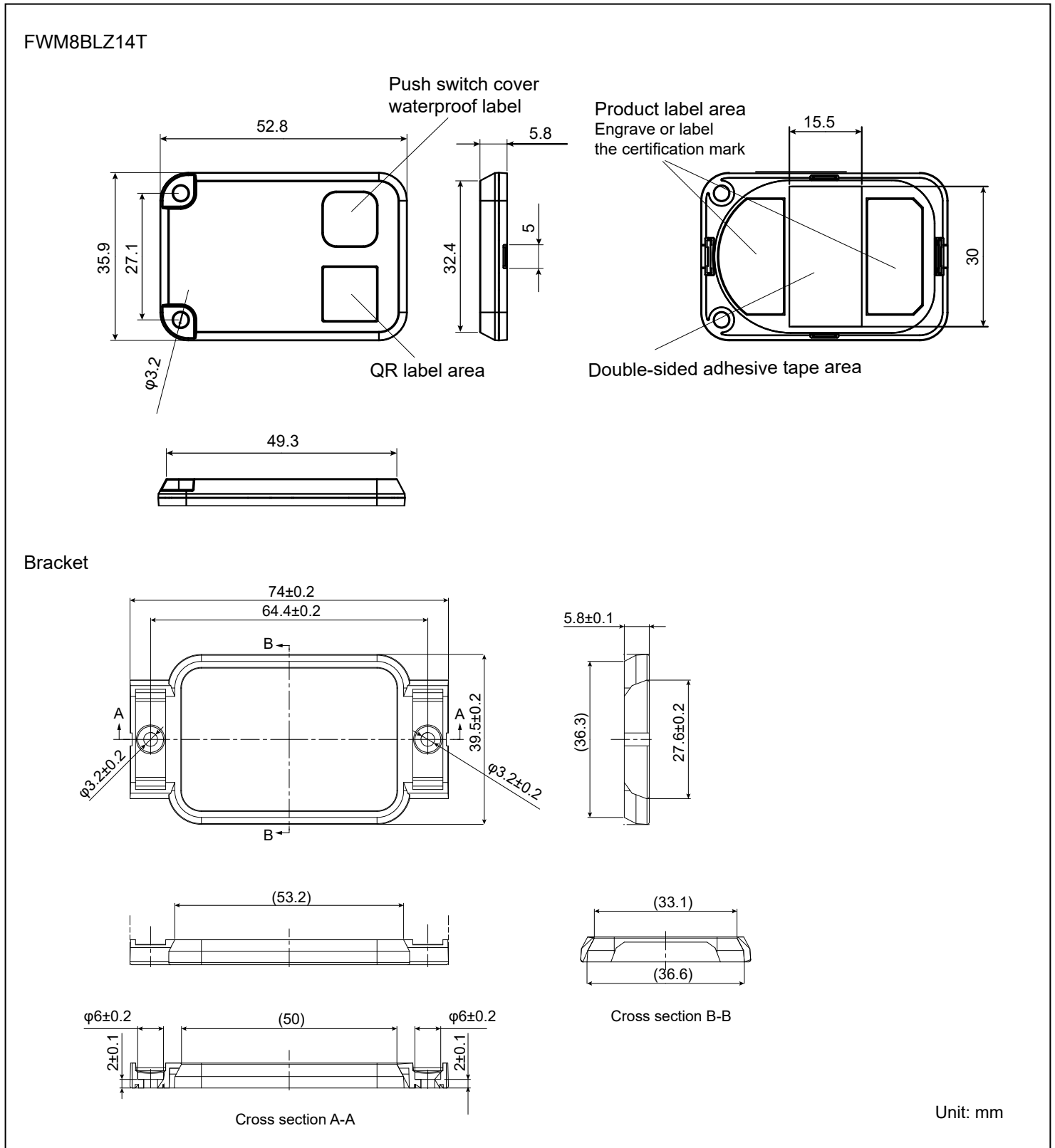


FWM8BLZ14T

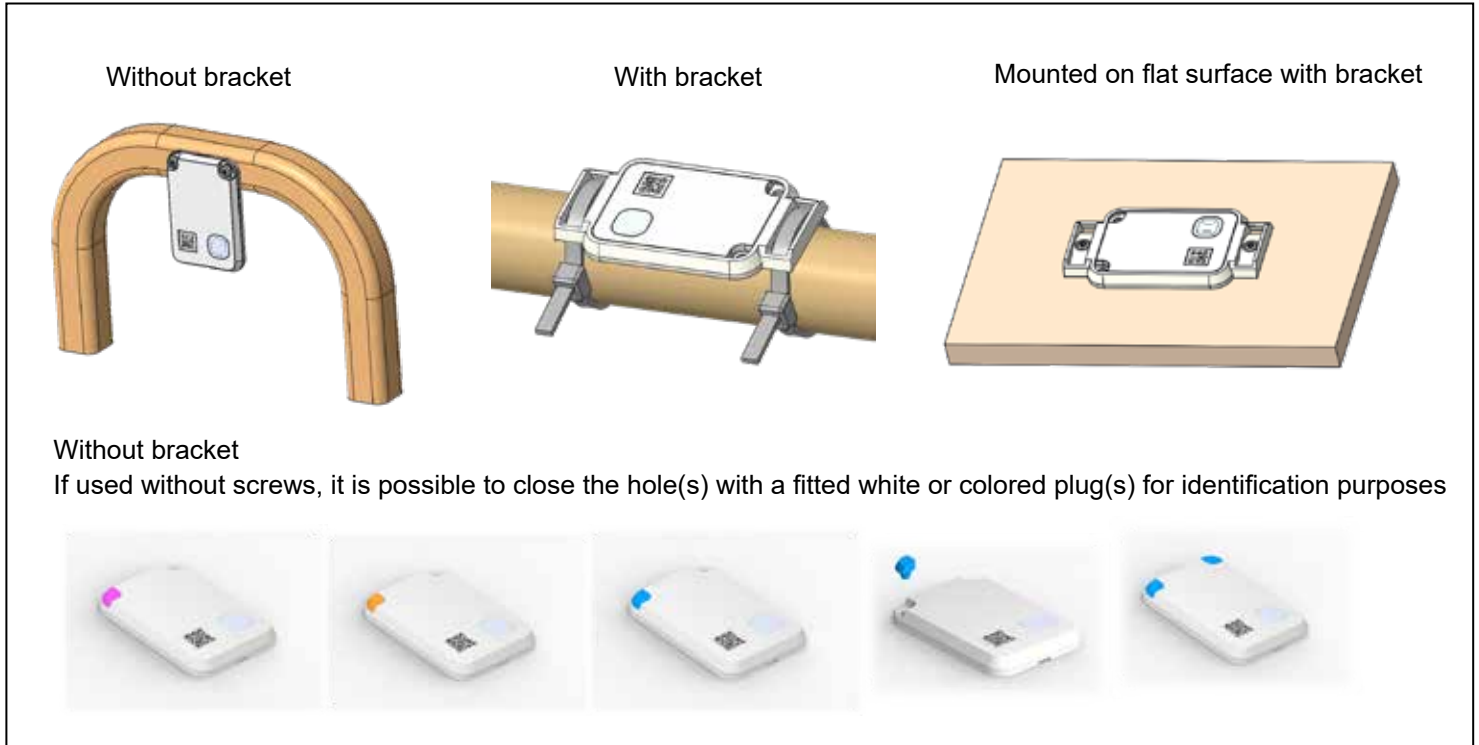


FWM8BLZ14T with bracket

■ Dimensions



■ Mounting options



Contact

Japan
FCL COMPONENTS LIMITED
Shinagawa Seaside Park Tower
12-4, Higashi-shinagawa 4-chome,
Tokyo 140 0002, Japan
Tel: +81 3 3450 1682
Email: fcl-contact@cs.fcl-components.com

Europe
FCL COMPONENTS EUROPE B.V.
Diamantlaan 25
2132 WV Hoofddorp
Netherlands
Tel: +31 23 5560910
Email: info@fcl-components.eu

China
FCL COMPONENTS (SHANGHAI) CO., LTD.
Unit 1105, Central Park –Jing An, No.329 Heng
Feng Road, Shanghai 200070, China
Tel: +86 021 3253 0998
Email: fcsh@fcl-components.com

North and South America
FCL COMPONENTS AMERICA, INC.
2055 Gateway Place, Suite 480
San Jose, CA 95110 U.S.A.
Tel: +1 408 745 4900
Email: fcai.components@fcl-components.com

Asia Pacific
FCL COMPONENTS ASIA, LTD.
No. 20 Harbour Drive, #07-01B
Singapore 117612
Tel: +65 6375 8560
Email: fcal@fcl-components.com

Web: www.fcl-components.com/en/

Copyright

All trademarks or registered trademarks are the property of their respective owners. FCL Components America or its affiliates do not warrant that the content of datasheet is error free. In a continuing effort to improve our products FCL Components America, Inc. or its affiliates reserve the right to change specifications/datasheets without prior notice.

