

DDR-3 DIMM Vertical Mount Socket

FCN-07 Series

RoHS compliant

FEATURES

- DDR-3: 240pin DIMM socket connector (press-fit or through hole type)
- Fujitsu original unique structure for twin contact points structure.

Item	Specification
Operating temperature range	-55°C to +85°C
Current rating	DC 0.5A
Voltage rating	AC 25V
Contact resistance	40mΩ maximum (DC 20mv, 10mA)
Dielectric withstanding voltage	AC 500V for 1 minute
Insulation resistance	1,000MΩ minimum (DC500V)
Insertion force	155.7N (about 15.9kgf) less than
Compliant pin insertion force	4,800N (about 489.5kgf) less than

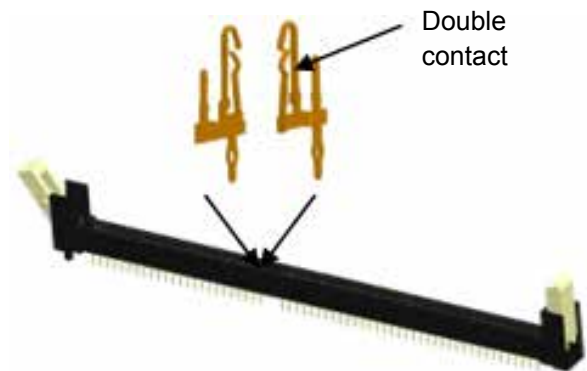
MATERIALS

Item	Specification	
Insulating material	LCP, UL94 V-0	
Conductor	Copper Alloy	
Plating	Contact	Gold plating
	Compliant	Tin plating
Hook	LCP, UL94V-0	

Plastic tray quantity: 40 pieces/tray
 Container quantity: 200 pieces



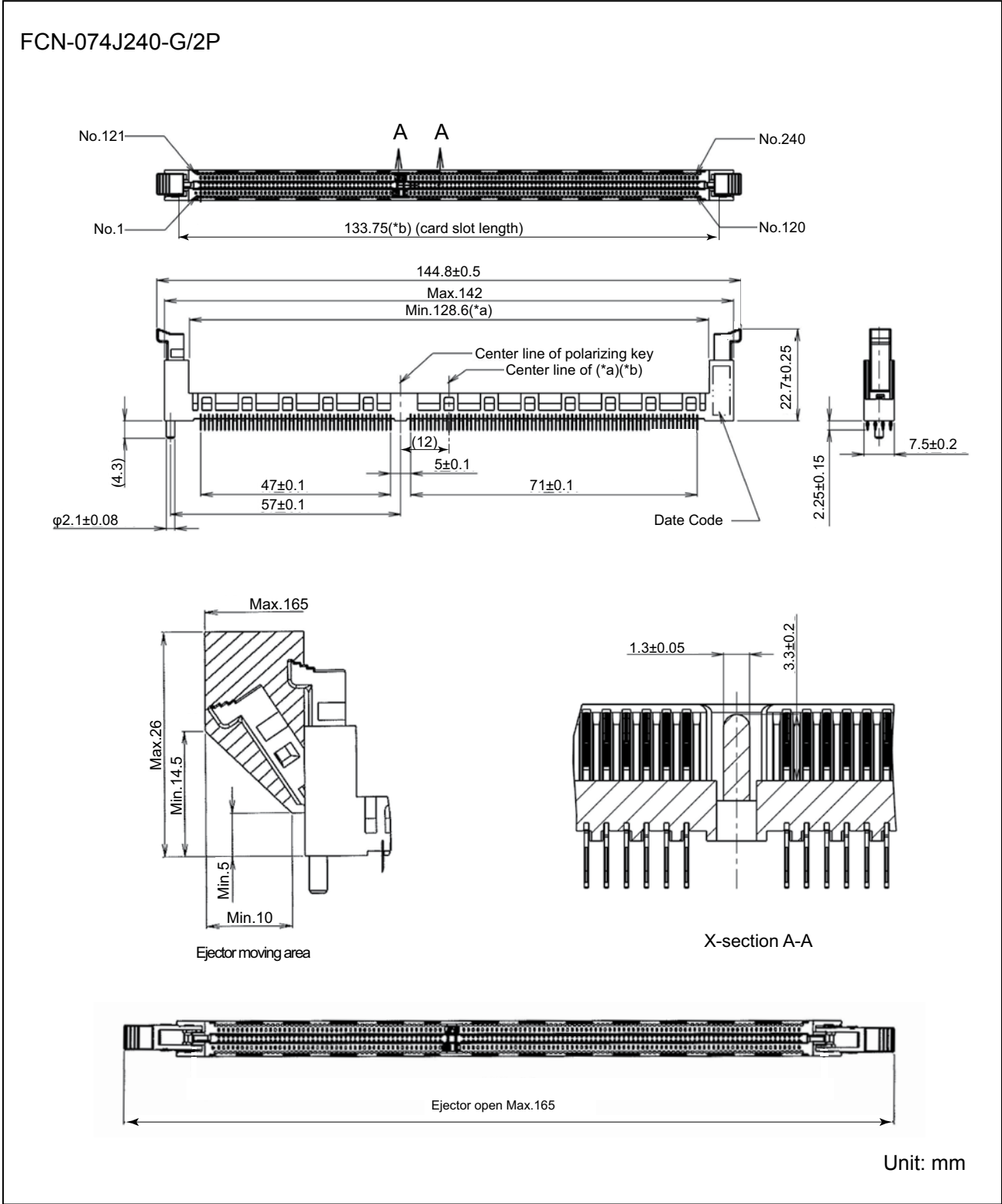
Fujitsu's FCN-07 DDR-3 DIMM socket is a vertical mount press-fit socket. The unique contact structure provides for twin points of contact that insure that dust is wiped clean when module is installed. In addition, the twin points guarantee constant contact between the module and contact even in a high vibration environment.



DDR-3DIMM Vertical Mount Socket

■ SPECIFICATIONS

Press-fit version

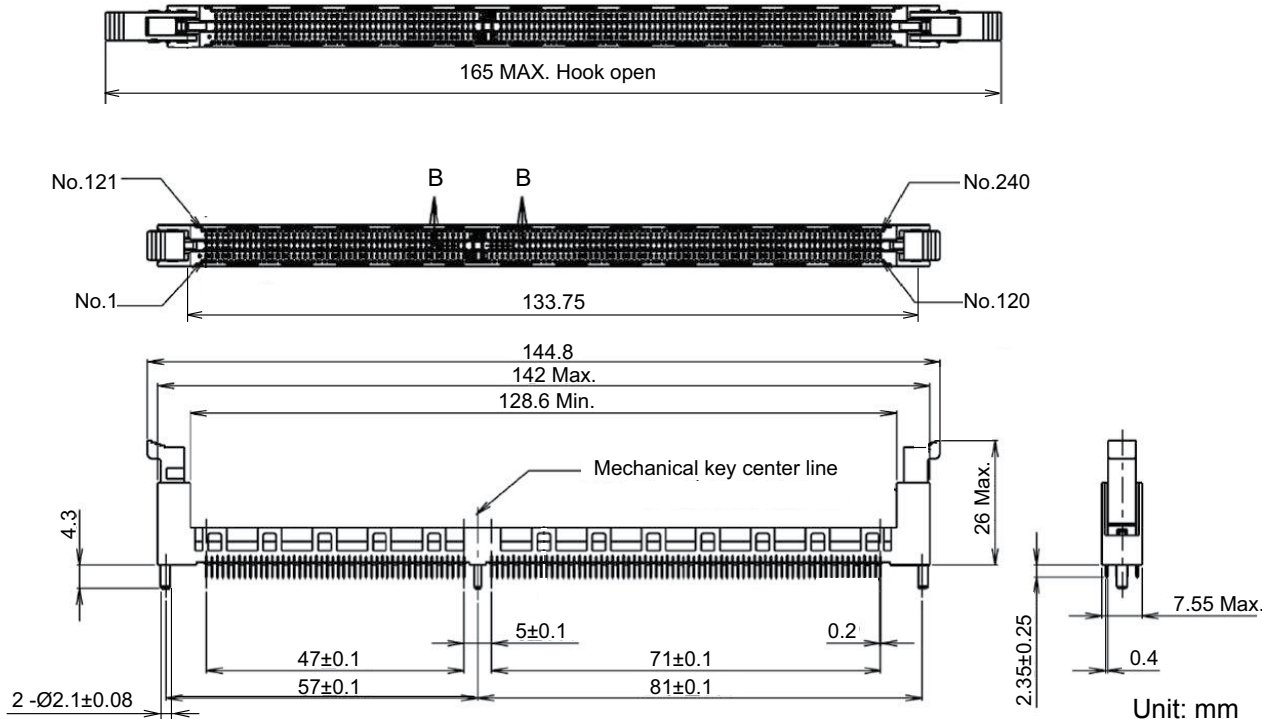


DDR-3DIMM Vertical Mount Socket

■ SPECIFICATIONS

Through-hole solder version

FCN-074J240-G/1D

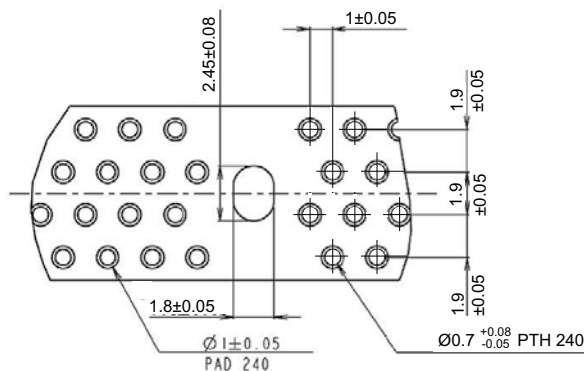
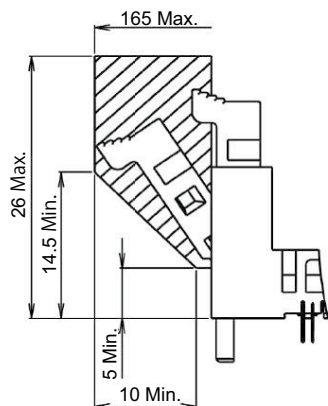


DDR-3DIMM Vertical Mount Socket

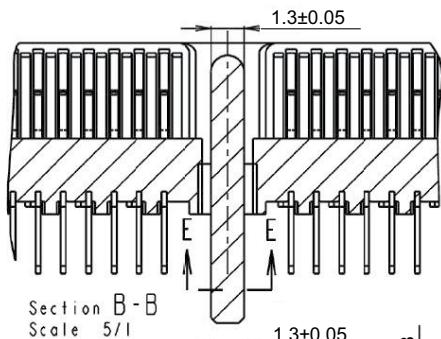
■ SPECIFICATIONS

Through-hole solder version

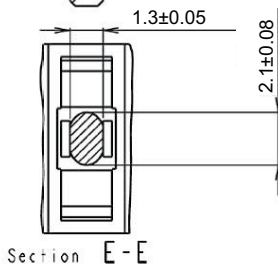
FCN-074J240-G/1D



Detail "C"
Scale 5/1

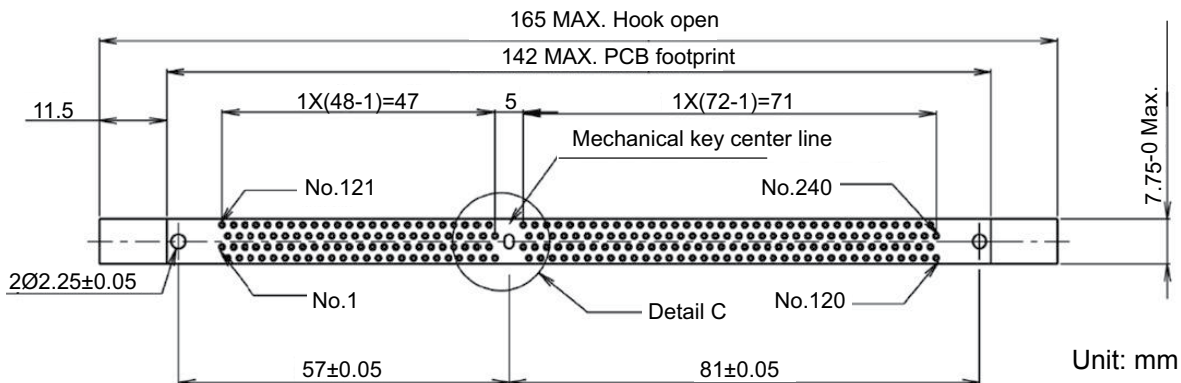


Section B-B
Scale 5/1



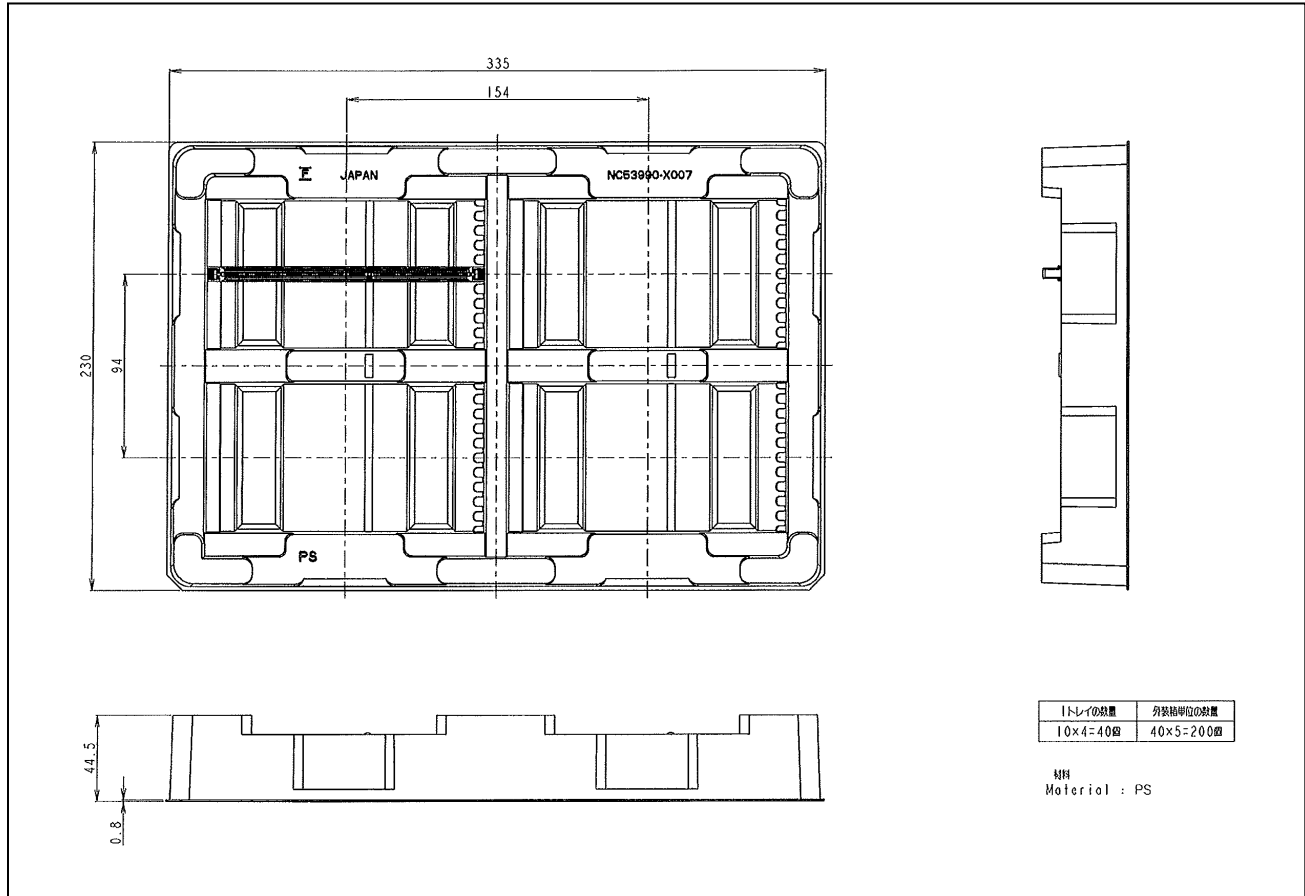
Section E-E

Applicable substrate
thickness (mm): 1.6



DDR-3DIMM Vertical Mount Socket

PACKAGING TRAY



Contact

Japan

FUJITSU COMPONENT LIMITED
 Shinagawa Seaside Park Tower
 12-4, Higashi-shinagawa 4-chome,
 Tokyo 140 0002, Japan
 Tel: (81-3) 3450-1681
 Fax: (81-3) 3474-2385
 Email: fcl-contact@cs.jp.fujitsu.com
 Web: www.fujitsu.com/jp/group/fcl/en/

North and South America

FUJITSU COMPONENTS AMERICA, INC.
 2290 North First Street, Suite 212
 San Jose, CA 95131 U.S.A.
 Tel: (1-408) 745-4900
 Fax: (1-408) 745-4970
 Email: components@us.fujitsu.com
 Web: http://us.fujitsu.com/components/

Europe

FUJITSU COMPONENTS EUROPE B.V.
 Diamantlaan 25
 2132 WV Hoofddorp
 Netherlands
 Tel: (31-23) 5560910
 Fax: (31-23) 5560950
 Email: info@fceu.fujitsu.com
 Web: emea.fujitsu.com/components/

Asia Pacific

FUJITSU COMPONENTS ASIA, Ltd.
 102E Pasir Panjang Road
 #01-01 Citilink Warehouse Complex,
 Singapore 118529
 Tel: (65) 6375-8560 / Fax: (65) 6273-3021
 Email: fcal@sg.fujitsu.com
 www.fujitsu.com/sg/products/devices/
 components/

China

FUJITSU ELECTRONIC COMPONENTS
 (SHANGHAI) CO., LTD.
 Unit 4306, InterContinental Center
 100 Yu Tong Road, Shanghai 200070, China
 Tel: (86 21) 3253 0998 / Fax: (86 21) 3253 0997
 Email: fcal@sg.fujitsu.com
 www.fujitsu.com/sg/products/devices/
 components/

Hong Kong

FUJITSU COMPONENTS HONG KONG Co., Ltd.
 Room 06, 28/F, Greenfield Tower, Concordia
 Plaza, No.1 Science Museum Road,
 Tsim Sha Tsui East, Kowloon, Hong Kong
 Tel: (852) 2881 8495 Fax: (852) 2894 9512
 Email: fcal@sg.fujitsu.com
 www.fujitsu.com/sg/products/devices/
 components/

Korea

FUJITSU COMPONENTS KOREA, LTD.
 Alpha Tower #403,
 645 Sampyeong-dong,
 Bundang-gu, Seongnam-si,
 Gyeonggi-do, 13524 Korea
 Tel: (82 31) 708-7108
 Fax: (82 31) 709-7108
 Email: fcal@sg.fujitsu.com
 www.fujitsu.com/sg/products/
 devices/components/

Copyright

All trademarks or registered trademarks are the property of their respective owners. Fujitsu Components America or its affiliates do not warrant that the content of datasheet is error free. In a continuing effort to improve our products Fujitsu Components America, Inc. or its affiliates reserve the right to change specifications/datasheets without prior notice. Copyright ©2017 Fujitsu Components America, Inc. All rights reserved. Revised November 7, 2017.