

DDR-2 DIMM SMT Vertical Mount Socket

FCN-07 Series

DISCONTINUED

RoHS compliant

■ FEATURES

- DDR-2: 240pin DIMM socket connector
- Co-planarity of 0.1mm
- Fujitsu original unique structure for twin contact points structure, which is tolerant of dust and flux

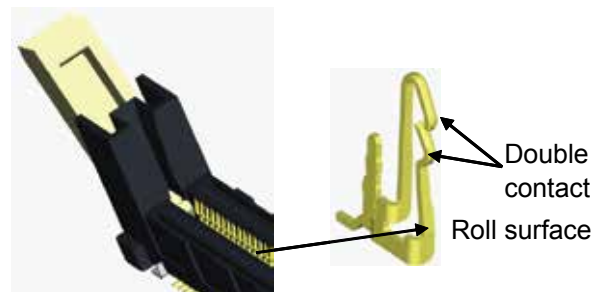
Item	Specification
Operating temperature range	-55°C to +85°C
Current rating	AC 0.5A
Voltage rating	AC/DC 25V
Contact resistance	DC20mv, 10mA
Contact resistance	40mΩ maximum
Dielectric withstanding voltage	AC 0.25kV for 1 minute
Insulation resistance	250Mohm minimum

Item	Specification
Insulating material	LCP, UL94 V-0
Contact	Copper Alloy Plating NiPdAu
Heating resisting tape	PL

Plastic tray quantity: 16 pieces/tray
 Container quantity: 16 x 5 = 80 pieces



Fujitsu's FCN-07 DDR-2 DIMM socket is a vertical mount SMT socket. The unique contact structure provides for twin points of contact that insure that dust and flux are wiped clean when module is installed. In addition, the twin points guarantee constant contact between the module and contact even in a high vibration environment.



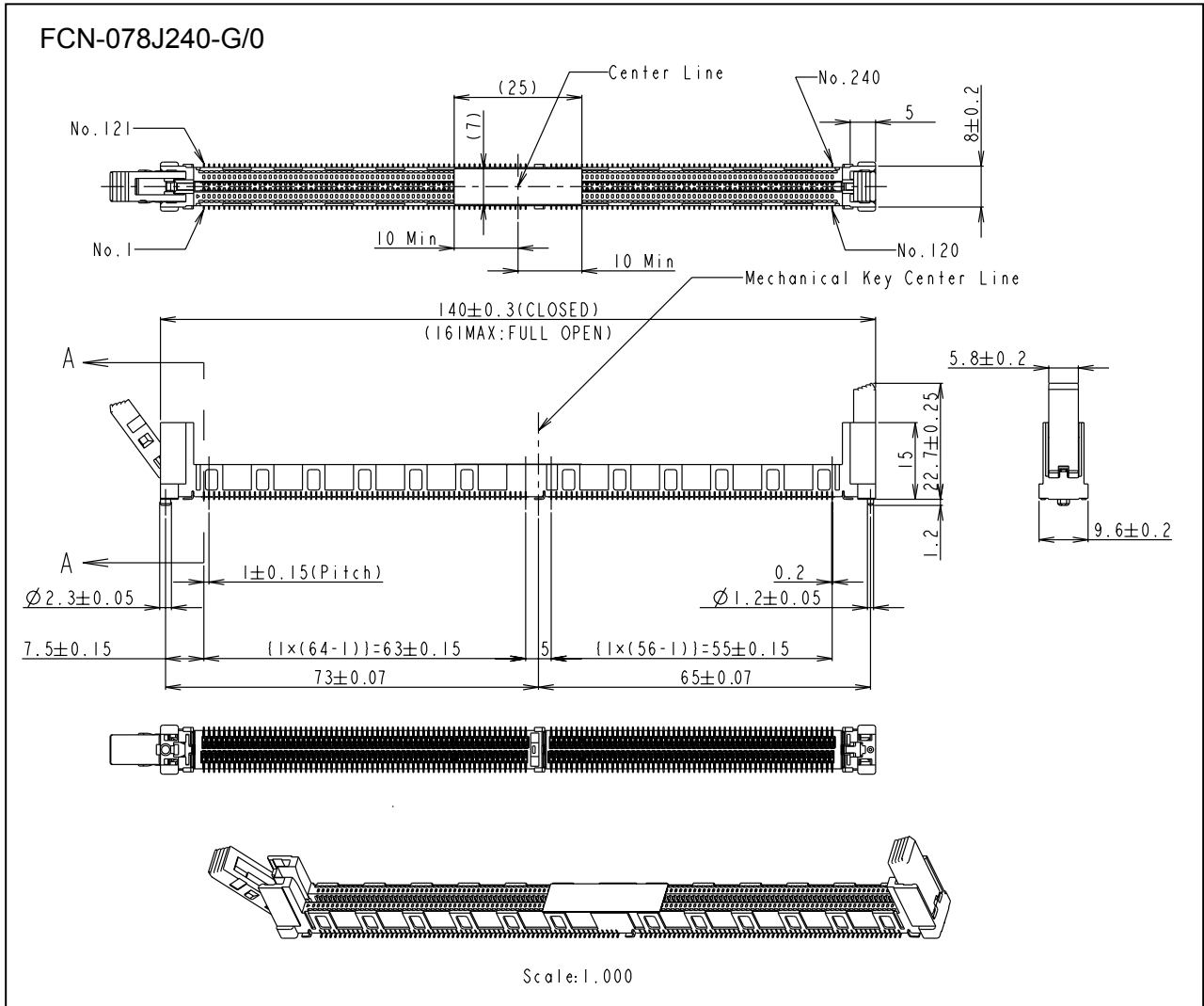
Fujitsu's precision stamping and molding allow the connector to have a coplanarity specification of 0.1mm. The connector has heat resistance tape added to the face of the connector for ease of vacuum pick-up.

Due to the overall length of the of the connector, Fujitsu has added a "solder bars" in the middle of the connector to insure proper IR processing when soldering the connector to the PCB.

FCN-07 series DDR-2DIMM Socket

DISCONTINUED

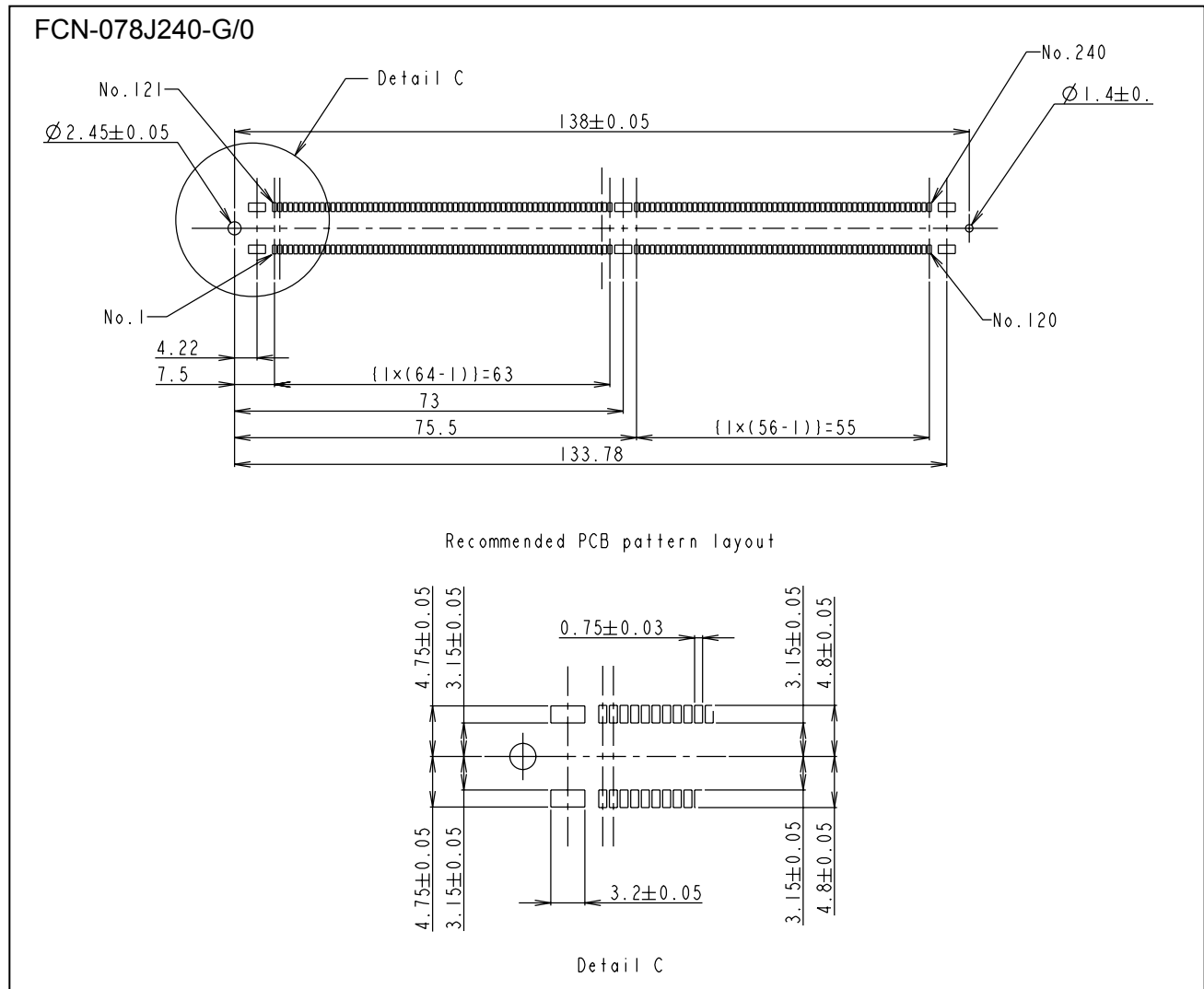
■ SPECIFICATIONS



FCN-07 series DDR-2DIMM Socket

DISCONTINUED

SPECIFICATIONS



Contact

Japan

FUJITSU COMPONENT LIMITED
Shinagawa Seaside Park Tower
12-4, Higashi-shinagawa 4-chome,
Tokyo 140 0002, Japan
Tel: (81-3) 3450-1681
Fax: (81-3) 3474-2385
Email: fcl-contact@cs.jp.fujitsu.com
Web: www.fujitsu.com/jp/fcl/

North and South America

FUJITSU COMPONENTS AMERICA, INC.
2290 North First Street, Suite 212
San Jose, CA 95131 U.S.A.
Tel: (1-408) 745-4900
Fax: (1-408) 745-4970
Email: components@us.fujitsu.com
Web: http://us.fujitsu.com/components/

Europe

FUJITSU COMPONENTS EUROPE B.V.
Diamantlaan 25
2132 WV Hoofddorp
Netherlands
Tel: (31-23) 5560910
Fax: (31-23) 5560950
Email: info@fceu.fujitsu.com
Web: www.fujitsu.com/uk/components/

Asia Pacific

FUJITSU COMPONENTS ASIA, Ltd.
102E Pasir Panjang Road
#01-01 Citilink Warehouse Complex,
Singapore 118529
Tel: (65) 6375-8560 / Fax: (65) 6273-3021
Email: fcal@sg.fujitsu.com
www.fujitsu.com/sg/products/devices/components/

China

FUJITSU ELECTRONIC COMPONENTS
(SHANGHAI) CO., LTD.
Unit 4306, InterContinental Center
100 Yu Tong Road, Shanghai 200070, China
Tel: (86 21) 3253 0998
Fax: (86 21) 3253 0997
Email: fcal@sgfujitsu.com
www.fujitsu.com/sg/products/devices/components/

Hong Kong

FUJITSU COMPONENTS HONG KONG Co., Ltd.
Unit 503, Inter-Continental Plaza,
No.94 Granville Road,
Tsim Sha Tsui Kowloon, Hong Kong 118529
Tel: (852) 2881 8495 Fax: (852) 2894 9512
Email: fcal@sg.fujitsu.com
www.fujitsu.com/sg/products/devices/components/

Copyright

All trademarks or registered trademarks are the property of their respective owners.

Fujitsu Components America or its affiliates do not warrant that the content of datasheet is error free. In a continuing effort to improve our products Fujitsu Components America, Inc. or its affiliates reserve the right to change specifications/datasheets without prior notice. Copyright ©2016 Fujitsu Components America, Inc., All rights reserved. Revised February 26, 2016