

Not for New Design

FCL Component Touch Panels

Embossed Switch Series

FID-1320 series

FCL Components Custom Industrial Resistive Touch Panels

Overview

The industrial resistive touch panels (FID-1320 series) feature a film-glass sensor with a flush surface top cover film structure and are available in custom sizes up to 22- inches. The FID-1320 series touch panels have 78% (typical) transparency, an operating life of 1million taps, and many options for dome switch configuration. The embossed switches are formed in the cover film to provide tactile click feel for the user, similar to the experience of mechanical switches.

Dome switch icons can be illuminated by LED backlight or the LCD.

Switch actions are communicated to the main system via the touch panel controller as coordinates, similar to standard finger input on the touch panel area. Switches, if required, can also be connected directly to the system without using the touch panel controller and can be designed with discrete wiring as a simple contact closure switch. The flush surface design is dust proof, water proof, and easy to clean.

Features

- Flush surface design
- Color frame, logo, legend
- Custom layout for specific needs
- Tactile embossed dome switches
- Strengthend glass option
- Graphical frame / Logo option
- Custom Design product for Industry
- RoHS compliant



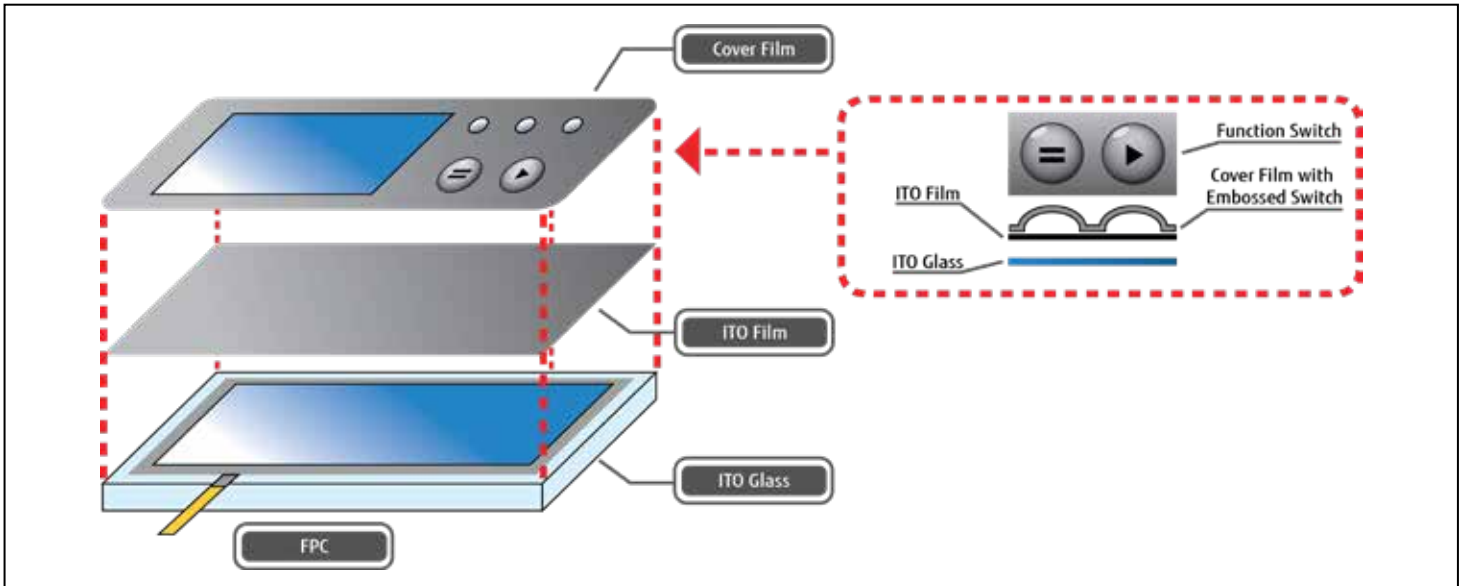
FID-1320 series

■ Specifications (example)

Item	Specifications	
Type	4-wire resistive	
Input method	Pen and finger	
Panel size	Up to 22-inch	
Hardness	Min. 3H	
Contruction	Film glass with cover film	
Tapping life	Min. 1,000,000	
Optical	Transparency	78% (typical)
	Haze	6 % (typical)
Electrical rated voltage	5.0 VDC (typical)	
Environmental conditions	Temperature	-5° to +60°C (extended range available)
	Humidity	5 to 90% RH *1

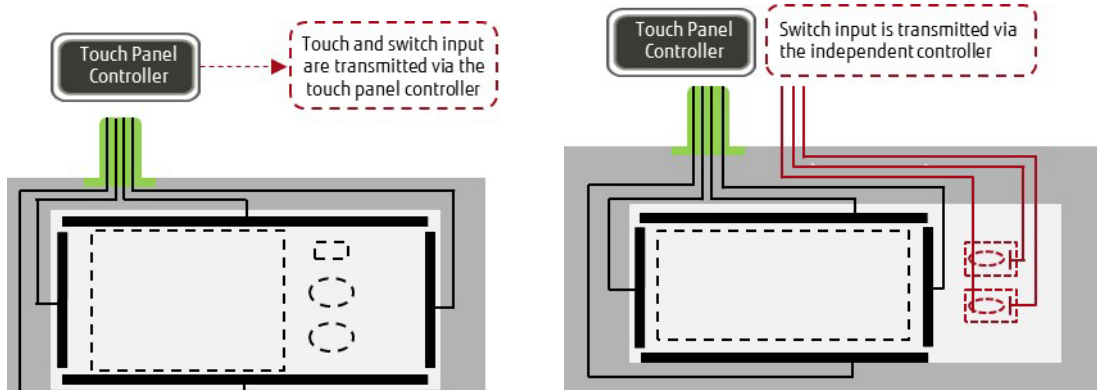
*1: Max. wet temperature is 38°C (without condensation).

■ Structure

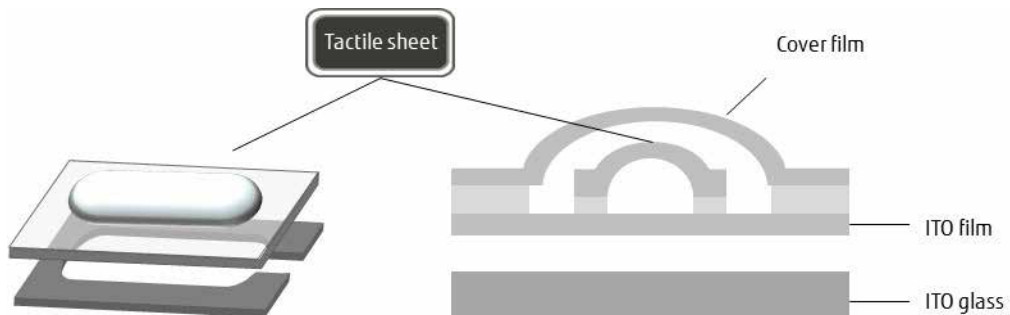


■ Options

1. The signal of the switches can be transmitted via the touch panel controller or independently.



2. Stronger tactile feedback can be provided by installing a tactile sheet.



Contact

Japan

FCL COMPONENTS LIMITED
Shinagawa Seaside Park Tower
12-4, Higashi-shinagawa 4-chome,
Tokyo 140 0002, Japan
Tel: +81 3 3450 1682
Email: fcl-contact@cs.fcl-components.com

Europe

FCL COMPONENTS EUROPE B.V.
Diamantlaan 25
2132 WV Hoofddorp
Netherlands
Tel: +31 23 5560910
Email: info@fcl-components.eu

China

FCL COMPONENTS (SHANGHAI) CO., LTD.
Unit 1105, Central Park –Jing An, No.329 Heng
Feng Road, Shanghai 200070, China
Tel: +86 021 3253 0998
Email: fcsh@fcl-components.com

North and South America

FCL COMPONENTS AMERICA, INC.
2055 Gateway Place, Suite 480
San Jose, CA 95110 U.S.A.
Tel: +1 408 745 4900
Email: fcai.components@fcl-components.com

Asia Pacific

FCL COMPONENTS ASIA, LTD.
No. 20 Harbour Drive, #07-01B
Singapore 117612
Tel: +65 6375 8560
Email: fcal@fcl-components.com

Web: www.fcl-components.com/en/

Copyright

All trademarks or registered trademarks are the property of their respective owners. FCL Components America or its affiliates do not warrant that the content of datasheet is error free. In a continuing effort to improve our products FCL Components America, Inc. or its affiliates reserve the right to change specifications/datasheets without prior notice.

Copyright ©2024 FCL Components America, Inc. All rights reserved. Revised February 1, 2024.
